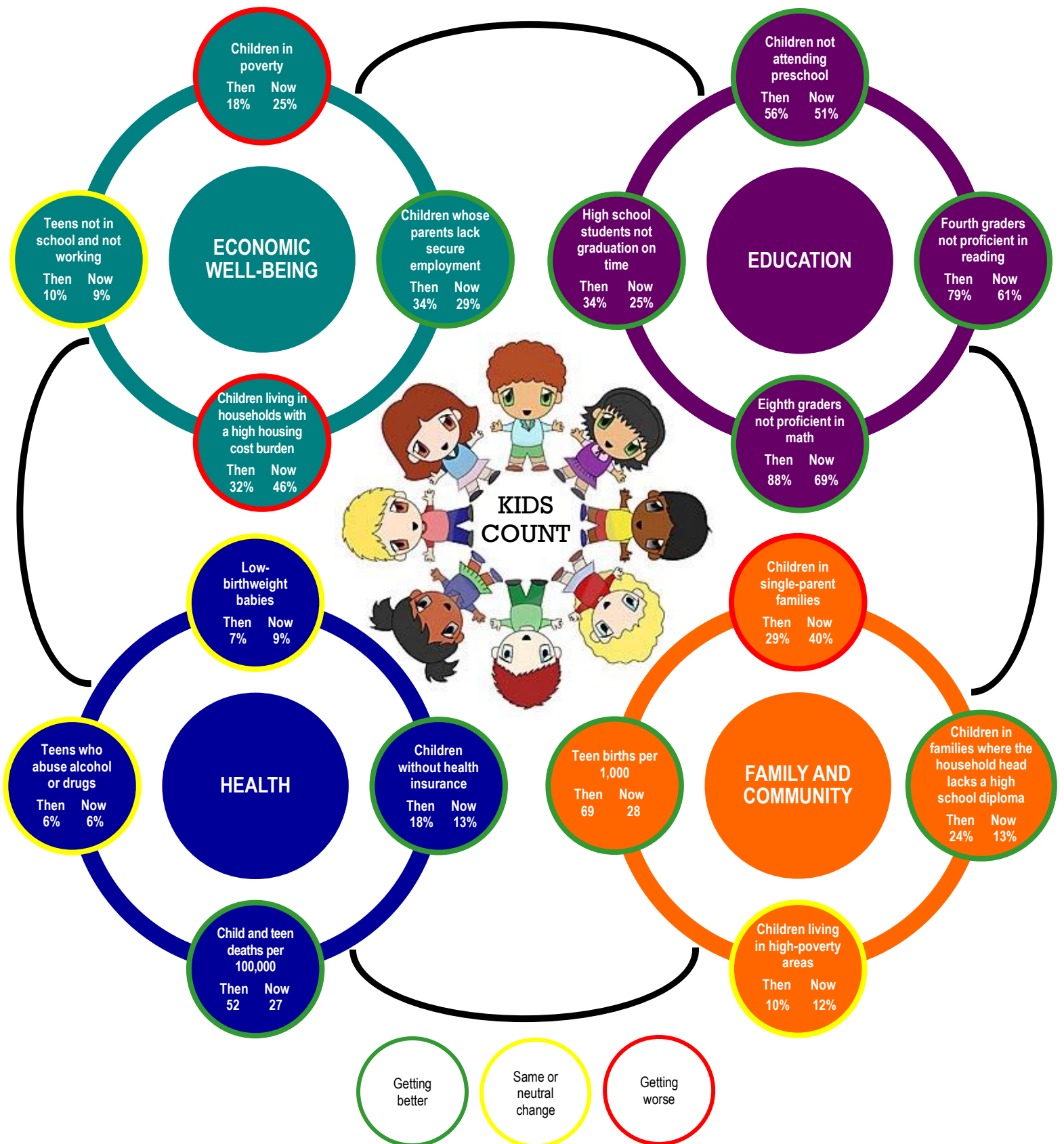


# Florida's Children Then and Now

KIDS COUNT® Data Book

25 years of bringing attention to national and state-level data on child well-being



DOMAIN	INDICATOR	YEAR	SOURCE	NOTES
ECONOMIC	Children in poverty	1990	Census of Population, CP-2-1 "Social and Economic Characteristics", accessed online May 9, 2014 from <a href="http://www.census.gov/hhes/www/poverty/data/census/1960/list.html">http://www.census.gov/hhes/www/poverty/data/census/1960/list.html</a>	
		2012	American Community Survey (ACS) 2012, American	
	Children in households that spend more than 30% of their income on housing	1990	Census of Population and Housing, Public Use Microdata Samples (PUMS).	
		2012	American Community Survey (ACS) 2012 1-year	
	Teens ages 16 to 19 not attending school and not working	1990	Current Population Survey (CPS), Basic Monthly Survey microdata 1990	Results are based on an average of nine months of CPS data-January through May and September through December.
	2013*	Current Population Survey (CPS), Basic Monthly Survey microdata 2013		
Children living in families where no parent has full-time, year-round employment	1990	Current Population Survey (CPS), Annual Social and	Results represent the work status of respondents from the previous calendar year. Therefore, survey years 2011-2013 represent the work status of respondents in years 2010-2012 and survey years 1990-1992 represent the work status of respondents in years 1989-1991.	
	2011*	Current Population Survey (CPS), Annual Social and Economic Supplement (ASEC) microdata 2011-2013		
EDUCATION	4th graders who scored below proficient reading level	1992	U.S. Department of Education, National Center for Education Statistics, National Assessment of Educational Progress (NAEP), accessed online on May 2, 2014 from	
		2013	<a href="http://nces.ed.gov/nationsreportcard/">http://nces.ed.gov/nationsreportcard/</a> .	
	8th graders who scored below proficient math level	1990	U.S. Department of Education, National Center for Education	
		2013	Statistics, National Assessment of Educational Progress	
	Children ages 3 to 4 not attending preschool	1990	Current Population Survey (CPS), School Enrollment and	Results are based on an average of three CPS School Enrollment and Internet Use Supplements. The 1990 estimates are from the October 1989, 1990, and 1991 Supplements and the 2011 estimates are from the October 2010, 2011 and 2012 Supplements.
2011*	Current Population Survey (CPS), School Enrollment and Internet Use Supplement microdata 2010-2012			
High school students not graduating on time	1990-91	U.S. Department of Education, National Center for Education		
	2011-12	Statistics, Common Core of Data (CCD), "NCES Common Core of Data State Dropout and Graduation Rate Data file" accessed online on May 2, 2014 from:		
HEALTH	Low-birthweight babies	1990	Centers for Disease Control and Prevention, National Center for Health Statistics, Vital Statistics, Public-Use data file.	
		2012		
	Children without health insurance	1990	Current Population Survey (CPS), Annual Social and	Results represent the health insurance coverage status of respondents from the previous calendar year. Therefore, survey years 2011-2013 represent the coverage of respondents in years 2010-2012 and survey years 1990-1992 represent the coverage status of respondents in
		2011*	Current Population Survey (CPS), Annual Social and Economic Supplement (ASEC) microdata 2011-2013	
	Child and teen deaths	1990	Centers for Disease Control and Prevention, National Center for Health Statistics, Vital Statistics. Accessed online from	
2010		<a href="http://wonder.cdc.gov/">http://wonder.cdc.gov/</a>		
Teens who abuse alcohol or drugs	2000/2001	Substance Abuse and Mental Health Services		
	2011/2012	Administration, National Survey on Drug Use and Health Administration, National Survey on Drug Use and Health accessed online		
FAMILY AND COMMUNITY	Children in families where the household head lacks a high school diploma	1990	Census of Population and Housing, Public Use Microdata	
		2012	American Community Survey (ACS) 2012 1-year	
	Children in single-parent families	1990	Census of Population and Housing, Public Use Microdata	
		2012	American Community Survey (ACS) 2012 1-year	
	Children living in high-poverty areas (census tracts with poverty rates ≥ 30%)	1990	Census of Population and Housing, Summary files.	
		2008-2012	American Community Survey (ACS) 2010-2012 5-year microdata files	
Teen birth rate (births per 1,000 females ages 15 to 19)	1990	Birth statistics: Centers for Disease Control and Prevention, National Center for Health Statistics, Vital Statistics, Public-Use data file.		
	2012	Population statistics: U.S. Census Bureau. Vintage Population Estimates files.		
* Different data source/estimates from the Data Book				

© Copyright 2014 Florida KIDS COUNT  
All rights reserved. No part of this report may be reproduced without permission.

The Annie E. Casey Foundation provides partial funding for the Florida KIDS COUNT effort with a grant to the University of South Florida.

Florida KIDS COUNT  
Department of Child & Family Studies  
Louis de la Parte Florida Mental Health Institute  
College of Behavioral & Community Sciences  
University of South Florida

Susan Weitzel, Director  
(813) 974-7411  
[www.floridakidscount.org](http://www.floridakidscount.org)

